



Canterbury Neighbourhood Centre  
**Annual Report 2023**  
*Celebrating 40 years*





# Minutes of Annual General Meeting 2022

**Date of meeting: Friday 21 October 2022**

**Meeting held: via Zoom (online)**

**Meeting opened at: 2pm**

## Attendance

Gordon Black, John Lagzdins, Ray Gruchy, Anna Martin, Tracey Martin, Pauline Miller, Mary Kotsopoulos, Carolyn Ingvarson, Patricia Summers, Danielle Short, Sue Braint, Matt Miller, Keir Paterson, Klaudia, Pat Ernest, Helen Holdsworth, Barbie Willis, Caddy Purdy, Nikki Maddern, Jane Addis, Margot Hennessy, Alison Vickers, Jill Hitchcock, Klaudia Lozo

## Apologies

Robyn Simmons, Tom Edwards, Catherine Grieve, Maureen Breuer, Caroline Carruthers, Caitlin Macdonald, Ruby Chu

## Welcome

The President Gordon Black chaired the AGM, welcoming attendees and acknowledged the apologies.

## Minutes from 2021 AGM

**Motion:** The minutes of the Canterbury Neighbourhood Centre Management Annual General Meeting of 17 September 2021 be accepted as a true and correct record of the meeting.

**Moved:** Gordon Black      **Carried:** All in favour

## Board report

Gordon thanked everyone for attending and remarked on the following from his report:

- referenced the challenges the Centre continues to face, including COVID's ongoing impact on the growth of classes and the financial position
- noted the successful tenant workshops in encouraging cooperation and a shared vision for the Canterbury Community Precinct and thanked Council for facilitating these meetings
- shared CNC's appreciation of Mayor Jane Addis who has been a champion of the Precinct, and
- thanked Council officers for their support, including Caddy Purdy, Danielle Short and Fiona Brown.

No questions were raised.

**Motion:** That the Board Report for 2021-22 be moved and accepted.

**Moved:** Gordon Black      **Carried:** All in favour

## Manager's Report

Tracey Martin welcomed and thanked everyone for attending the AGM and agreed that 2022 has been a challenging year for the Centre, commenting that:

- it has been reassuring to be back in the office though there remains some community reluctance to attend classes after COVID
- global pressures and general fatigue also have contributed to lower class numbers
- construction delays will see CNC anticipating commencing in the new Community Precinct in term 1 2023
- focus has been on preparing to move into the new premises, planning and getting to know the other tenants, we have come away with a strong vision for the Precinct and a big mandate to deliver
- assets in the new space will dramatically shift our programs and widen our audience
- CNC remains very excited about the move and the opportunities to partner with co-tenants and other organisations to deliver a wider range of programs and activities
- thanks to Councillor Jane Addis for her support of the project, and to Council particularly Caddy Purdy, Danielle Short and Fiona Brown
- Acknowledgment of the support and resources from Neighbourhood Houses Victoria, CNC staff and the CNC board.

## Questions from the floor

***How will CNC interact with the other tenants in Canterbury Community Precinct?***  
- Matt Miller

**Tracey** noted that CNC has been working closely with some of the other tenants, including with the Canterbury Toy Library in grant application support. CNC is also exploring delivering community events together and with the Maling Rd traders, for example Children's Week. CNC is currently developing a calendar of shared events for 2023 and expect that these will grow over the next few years.

***How will people access the Community Precinct? What will be the connection with other areas such as Maling Rd and Canterbury Gardens?*** - Matt Miller

**Gordon** noted that the Canterbury Community Action Group has been campaigning to bring the various elements of the community to become more integrated. For example, improving access through the railway car park has involved negotiating with various authorities. Gordon noted that Jane Addis may wish to comment further about the progress of this work with Council.

**Motion:** That the Manager's Report be moved and accepted.

**Moved:** Gordon Black      **Carried:** All in favour

## Treasurer's Report

John Lagzdins stated that the Annual Report showed the financial statements and audit accounts presented and noted the current deficit of \$18,000. John noted that:

- the financial performance shows that the class activities are operating under difficult circumstances
- although there is a deficit, CNC is well covered in terms of its financial liabilities
- the continued confidence of Council who are aware of CNC's position
- the Board and Tracey have actively been engaged to improve the financial position.

John and Gordon noted that Patricia Summers submitted several specific budget questions in detail the day before the AGM (20 October). The Board will address these questions in writing after the AGM.

## Questions from the floor

***The level of deficit is a concern and I wonder how CNC will operate next year having more hours and more responsibility? I noted with surprise that CNC membership income has decreased – Patricia Miller***

**John** noted that these concerns are front and centre for the Board and that we have submitted our views with regards to the financial deficit to Council and have received a very positive response. He noted that the drop in CNC membership has been very small and that this has been anticipated with the continued impact of COVID. The decline in membership fee income has been negligible and is consistent across the Neighbourhood House sector. John reiterated that CNC has a strong cash balance.

**Gordon** noted that John and Tracey have taken considerable time and resources in reducing the anticipated deficit and mitigating financial risk, revising staff roles and expenditure.

## Comments from others present

**Kier Paterson**, CEO – Neighbourhood Houses Victoria, noted that a decline in membership has been consistent across the sector and that many people have continued to be concerned about COVID. The position of CNC is very similar to all Neighbourhood houses and that the strong feedback is that enrolments are starting to pick up in the last quarter of 2022.

**Jill Hitchcock**, Manager – Alamein Neighbourhood & Learning Centre, agreed that this has been a very similar pattern for Alamein and that the impact of COVID has continued in 2022 with a lack of confidence for people in booking into classes and a large number of cancelled programs due to last minute cancellations. Jill noted that Alamein's experience has been that the new building has opened so many opportunities for new partnerships and cohorts. CNC is in a very strong position to build on these new opportunities in Canterbury Community Precinct.

***Is CNC going to rely on organic growth in the new Canterbury Community Precinct?***  
**- Matt Miller**

**Tracey** noted that CNC have a very clear strategy for program development based on the work with Leanne Fitzgerald started in 2021. We have a range of new programs and activities that are for community building as well as income generation. New marketing initiatives are being launched this year including a new website and branding that are building the profile of CNC. The opportunity to offer school holiday workshops, after hours classes and room hire are all potential new sources to build our income in the Community Precinct. These will be introduced as soon as we are in our new facilities.

The popularity of Canterbury Historical Walking tours, Seniors Festival promotions and *3126* magazine are building CNC's reputation and actively increasing engagement across the community particularly with new demographics. These might not be directly income generating but are slowly building CNC's reach and reputation. It is also an important part of our strategy to support new social programs such as Chatty Cafe and Umbrella Dementia to ensure that we are relevant to the Community we serve.

**Motion:** To receive and consider the Treasurer's Report and, if thought appropriate, pass the following resolutions: 'That in accordance with part 7 of the *Associations Incorporation Reform Act 2012*, the statement containing the Income and Expenditure of the Association for the year to 30 June, 2022 and the Assets and Liabilities of the Association at 30 June, 2022 be accepted.'

**Moved:** Gordon Black      **Carried:** All in favour

## General Business

Gordon called for any additional comments and questions.

## Comments

**Jane Addis** noted how impressed she is with the work CNC has achieved in what has been a very difficult year in challenging circumstances. She noted that the new Precinct presents so many extraordinary opportunities for CNC, many of which we cannot even contemplate now. Council is very enthusiastic about the Precinct. Congratulations to Tracey, the Board and team. Well done.

**Keir Paterson** commended the staff, management and Board getting through a very difficult year in the sector. On behalf of Neighbourhood Houses Victoria, we are very excited to see the new Precinct and what CNC will deliver.

**Sue Braint** thanked Tracey and all the CNC staff who do a terrific job supporting tutors.

**The Chair** thanked everyone for their attendance and participation and called the 2022 Annual General Meeting to a close.

**Meeting closed:** 2.55pm



*Celebrating 40 years*







## President's Report

As I look back on the 22-23 year I can find only one word to characterise it – *momentous*. Finally, we are in our home in Kendall Street. It is impossible to over-emphasize the significance of this; in over 40 years of existence, this is the first time Canterbury Neighbourhood Centre has occupied our own purpose-built premises.

Looking back to July 2022 it is in some ways hard to remember what life was like. We had only recently left behind the spectre of lockdowns but we had yet to become comfortable or even blasé about Covid as most of us are today. CNC was still operating on a very limited basis from premises rented by BassCare and the Camberwell Hockey Club. While we were limited as to the classes we could offer we also struggled with reluctance of people to attend. Nevertheless, we were filled with anticipation for our move to Kendall Street.

After many frustrating delays and a meticulously planned relocation, Canterbury Neighbourhood Centre along with our initial group of tenants – the kindergarten, maternal health, toy library and occasional care – finally moved in March.

It would be wonderful to report that everything went like clockwork but inevitably there were teething problems. It has been challenging at times to say the least, particularly for our Manager Tracey and Boroondara Council to work through rectifications, so as a result several important components of the development are a long way behind completion schedule and principal among these are the garden beds. Additionally Phase 2 of the development which will provide a home for the Canterbury and Surrey Hills history groups and Multicap (formerly Interchange Inner East) is still some months from completion. It is within sight though.

Nevertheless, our new home is wonderful.

One just has to walk into the space, and you feel a fantastic positive vibe. This is translating into many new participants enjoying what CNC has to offer and we, in turn, are working hard to explore, develop and expand the range of activities, courses and events that are offered. Tracey will write more of this in her report.

**... our new home is wonderful. One just has to walk into the space, and you feel a fantastic positive vibe. This is translating into many new participants enjoying what CNC has to offer.**

Due to our extended 'homelessness' for nearly eight years, Covid and reduced classes and no access to other streams of revenue this has had a substantial impact on our financial position. This last year we have run at a loss, despite both our Treasurer John Lagdzins and Manager Tracey, re-working the budget to every extent possible and Tracey and her staff being re-allocated tasks.

The board has given serious consideration to this situation. Fortunately, we are in a very secure financial position thanks to the diligent work of previous boards and management. We therefore anticipate that we will be able to sustain the budgeted loss for 2-3 years with the proviso of careful, ongoing monitoring and keeping a firm focus on the revenue side of the ledger. We are prepared to accept this loss provided

**Tracey and her team are currently working towards increasing classes which, despite their lean marginal profit, otherwise generate immense community loyalty and connectedness - enriching our Centre in other positive ways.**

that active steps, are taken to improve the bottom line. Tracey and her team are currently working towards increasing classes which, despite their lean marginal profit, otherwise generate immense community loyalty and connectedness -enriching our Centre in other positive ways. Venue hire on the other hand - a new income source previously not available to us can produce a very profitable revenue stream and this is being actively pursued. Other areas we are looking to are commercial sponsorship, gifts and legacies. I throw it out to our community, "Can you help?".

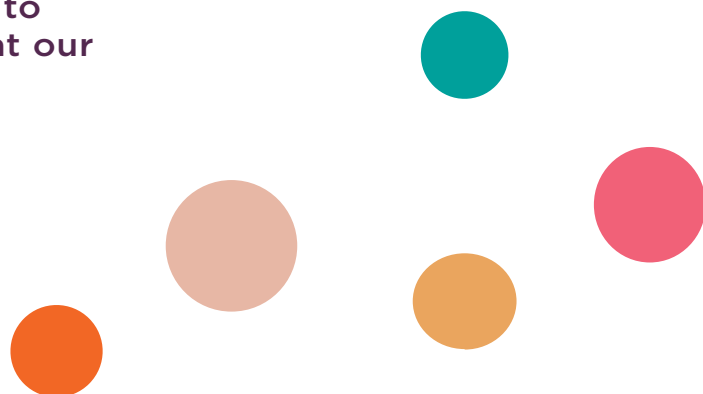
The new Neighbourhood Centre is a fabulous resource for our community and your board and management are absolutely committed to delivering the services that our community want. On behalf of the board and the community I sincerely thank Boroondara for providing this great place. In particular, let me acknowledge the great support we have received from Councillor Jane Addis (Maling Ward) and from Councillors Lisa Hollingsworth (Lynden Ward), Di Gillies (Junction Ward) and our Mayor Felicity Sinfield (Cotham Ward).

**. . . your board and management are absolutely committed to delivering the services that our community want.**

A community resource like our Neighbourhood Centre is built on the passion and commitment of a small number of people. Principal among these are the employed staff as they work far harder and longer than is reflected in their pay packets. Our community is indebted to our manager Tracey Martin and her team Anna, Caitlin and Mary. In addition, they are supported by an enthusiastic and growing cohort of volunteers without whom we would struggle.

And finally, a word about the board. The board members, as directors, hold very significant responsibility to represent you, Canterbury residents, and the wider community who use the Centre. The directors are all volunteers who give their time, considerable skill and experience freely to help take this project forward; all of them have other demands on their time. The current board members apart from myself are John Lagzdins (Treasurer), Helen Holdsworth (Secretary), Joanne Marchese, Trisha Crichton and Phil Robinson. I thank them on behalf of the community.

**Gordon Black  
President**



## Manager's Report

Canterbury Neighbourhood Centre was founded on the vision of a place of friendship and fun, a welcoming place for people to gather and enjoy activities and develop friendships. Mary Dorey was the visionary who saw a community need and an opportunity in the underutilised facilities of her church to create a space to support locals. Mary put the idea to the Canterbury Baptist Church and received their overwhelming support.

Mary, together with a small committee, started planning to create a place of welcome and support for the community. Pioneers in what we now call community development and engagement, this committed group identified two key demographics in need – single and young mothers with families, and more mature and/or recently retired people – and planned programs and activities to cater for these needs. These initial activities, run entirely by volunteers, commenced in September 1981, and Canterbury Neighbourhood Centre was born.

**Pioneers in what we now call community development and engagement, this committed group identified two key demographics in needs – single and young mothers with families, and more mature and/or recently retired people – and planned programs and activities to cater for these needs.**

Over the following years Colleen Morgan, one of the early committee members, was appointed as CNC's first coordinator as the number of activities continued to grow. To better serve its development, CNC became an independent incorporated association in 1987, but retained close ties with the church, who continued to provide premises at very modest cost to the Centre.

Neighbourhood House Coordination Funding was secured in 1988 and continues to this day. The Centre was also awarded an ongoing Service Agreement with City of Boroodara in 1997. Both grants allowed for increased operating hours and greater stability for forward planning, as well as more staff to support the Centre's continued growth. Through the mid 2000's the changing needs of the Church meant they could no longer guarantee security of tenure to CNC, and in late 2008 the search for a new and permanent home began. This insecurity continued until early 2015 when the restrictions placed on the Centre's operations and the proposed cost of remaining at the Church finally became untenable and alternative accommodation for the Centre was sought.

CNC relocated to share premises with BASScare in Rochester Rd in April 2015. Though not the ideal place to operate a Neighbourhood House, BASScare were welcoming and accommodating hosts. Through a collection of satellite sites and a scaled down program, CNC continued to run a modest program of community activities. After eight years of temporary accommodation, two years of lockdowns through a global pandemic, and many challenges from our constrained operations along the way, we finally moved into our new and beautiful **permanent** home in March 2023. A home specifically designed with Mary Doery's vision in mind – a place of welcome, of friendship and support – a place for our community.

## Manager's Report cont.

The move into the Canterbury Community Precinct has been nothing less than transformative for CNC. With beautiful multi-purpose spaces, an art room, meeting rooms as well as a community lounge the Centre is a welcoming space that the community has embraced. We have yet to tire of the exclamations and wow of new visitors to the space. The benefits of these spaces and the visibility and accessibility within the community has already had a significant impact on our operations and indeed on those of our co-tenants in the building. Our membership is growing, as is the range of programs we can now offer. To complete our transformation, we launched our vibrant new logo and branding with a beautiful new website.

In the few months since our relocation we have run our first school holiday program over the Easter break, welcoming a whole new audience of families to CNC. Launching with a LEGO incursion and sewing workshop, we have had a great response from the community looking for unique holiday activities. It has been wonderful to have many of our existing members bring their grandchildren to the Centre too.

### **The move into the Canterbury Community Precinct has been nothing less than transformative for CNC.**

The much-expanded free community library has also been very popular with locals regularly stopping by to pick up a book or to enjoy a cup of tea in the community lounge. In May we ran our first Chatty Café, indeed the first Chatty café in Boroondara, with a lovely group of regulars now participating.

We welcomed upholstery and playgroup programs back to our base after many years of operating in satellite locations and look forward to working with our community gardeners when the community garden is finished later in the year.

Working with the other tenants in the Precinct, Playstation Occasional Care, Canterbury Gardens Kindergarten, Maternal and Child Health and Canterbury Toy Library, has been collaborative, supportive and friendly. Multicap and the Canterbury and Surrey Hills history groups will join us later in the year when stage two of the build is complete. As we all settle into the new Precinct there are many opportunities for CNC to work with our co-tenants to deliver activities for all ages.

The new facilities also afford us a new income stream through hire of our spaces. After the impacts of both Covid and many years of limited operations, this is much needed revenue. We already have four regular hirers join us and look forward to welcoming more as we grow this new opportunity.

The move to the precinct has been overwhelming and exhausting with a very steep learning curve as we embraced our new home and the new responsibilities of our lead tenant role. Our amazing administration team, Mary Kotsopoulos, Caitlin Macdonald and Anna Martin have risen to the challenges, never failing to create a welcoming space for everyone who visits the precinct despite the challenges of a new building and its many teething issues. Their commitment and dedication are priceless and I truly value the support and comradery of our team.

Our team of skilled and experienced tutors has grown in the months since our relocation as we start new and diverse programs. Tutors and facilitators in the neighbourhood house sector are both teacher and community developer tasked with growing skills and community in their classes.

Our volunteer cohort has continued to grow this year, with new administration volunteers, a community library coordinator, and social groups including Chatty Café, book circle, and garden club. Neighbourhood Houses could not exist without the many valuable hours of time given by volunteers, and their contribution

**Neighbourhood Houses could not exist without the many valuable hours of time given by volunteers, and their contribution makes a real difference, upholding the Centres founding vision of community supporting community.**

makes a real difference, upholding the Centre's founding vision of community supporting community.

3126, featured on page 17, celebrates five years as part of the Canterbury community this year. I extend my heartfelt thanks to the team of volunteers who produce this publication, everything from writing, editing and graphic design is completed by them. A huge thank you to the distribution team too, who deliver to every home and business in Canterbury.

As we farewelled BASScare this year, we remain grateful for their support and accommodation for the past eight years. This is not the end of our collaboration though, with conversations about continuing opportunities already underway. Our partnership with Camberwell Hockey Club will remain, as most of our wellbeing programs continue to run at the Matlock Centre. Our classes at Matlock are well settled into the light and airy space in the social room, and we thank the club for their friendship and cooperation. We look forward to working together in new ways as our programs expand.

I want to acknowledge and thank Boroondara Council, not only for the beautiful and well-equipped home, but for their ongoing backing through the build and now the settling in period. Special thanks to Fiona Brown, Caddy Purdy, Danielle Short, Katelyn Stanyer and more recently Lachlan Bannister, who have kept us well informed

**I want to acknowledge and thank Boroondara Council, not only for the beautiful and well-equipped home, but for their ongoing backing through the build and now the settling in period.**

and supported. Additionally, I would like to thank the Capital Projects team who, despite the challenging build and defects period, have gone above and beyond to ensure our new home is both sound and a joy to share. Special thanks also to Jane Addis for her ongoing support of CNC and the Precinct.

I would like to also acknowledge the Board, whose learning curve has been as steep as ours in the office as we embrace the responsibilities of our lead tenant role, the challenges of rebuilding from a depleted base, and the financial impacts of the past few years. Our Board provides a solid foundation for the Centre to grow, committed not only to a well governed and fiscally responsible centre, but also to always holding true our values of community inclusion and support.

My final thank you is to our community. We are grateful for your loyalty, your support and your patience over the past few years, and we are delighted and wholly encouraged by your overwhelmingly joyful embrace of this amazing new community space.

The next chapter for Canterbury Neighbourhood Centre has just begun. With a new home, a growing participant base, and with the support of Council, our co-tenants and our community we are building a new CNC firmly rooted in Mary Doery's vision and the work of all those who have followed.

**Tracey Martin  
Manager**

## Come 'Have a Chat'

It is indeed a paradox of our age that in a computer connected world where we have more ways to communicate than ever before, we feel less connection with each other. It would seem to be such a simple thing, sharing a cuppa and chat, yet social loneliness and isolation are growing issues in our community.

Chatty Café is an initiative that aims to connect communities and increase social interactions in a relaxed and welcoming space. Neighbourhood Houses are ideal venues for the scheme that addresses the mental wellbeing and health related issues associated with loneliness and isolation.

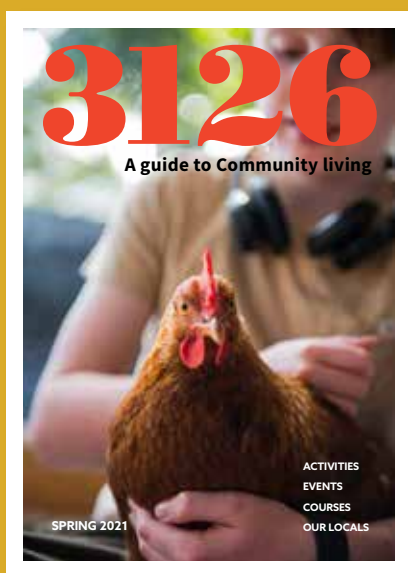
Chatty Café launched at CNC, on 10 May 2023 and we haven't had a quiet Wednesday morning since. There is such a buzz that permeates the whole lounge as café members come together over a cup of tea and a biscuit. Strong connections have grown and friendships are being forged across our regular group of 10-12 chatters and two dogs.

Volunteers, sourced from the participant group, facilitate the conversation and welcome new chatters to the table. Volunteering itself is an additional source of empowerment and connection.

CNC is proud to be the first Chatty Café in Boroondara, and even prouder of the group of Chatty Café members who come together each week, forging real connection and overcoming loneliness one cup of tea at a time.



# 3126 – Our Community Magazine



When the first edition of 3126 was published in late 2018 we could only imagine where our little community magazine would go. Five years on, 3126 has flourished, evolving into a reflection of the Canterbury community.

3126 is researched, written, edited, photographed and produced by a small team of very talented and dedicated volunteers. It is distributed to around 3500 residences by our wonderful loyal 'walking' volunteers each quarter, and delivered to local libraries, businesses and MP's offices.

Through 3126 – local stories are told, local heroes celebrated, and successes shared. We learn about our history, ambitions for the future and importantly help support local business. And the feedback we receive from the community tells us that 3126 is now a valued part of Canterbury life.

3126 is also a key publication for Canterbury Neighbourhood Centre, promoting programs, events, activities and social groups. 3126 achieves much more than print promotion though – the magazine brings people together through sharing their stories.



At its heart, 3126 supports connection, creates a sense of place and belonging and builds Canterbury's community. It is this unique community

enrichment role that makes the publication special.

We are immensely proud of 3126 and what it has achieved, and immeasurably grateful for the people who have volunteered their time and talents to produce and distribute it for the past five years.

# Our People

## Centre Staff

**Tracey Martin** – Centre Manager  
**Mary Kotsopoulos** – Administration  
**Caitlin Macdonald** – Administration and Finance  
**Anna Martin** – Community Engagement

## Serving Board Members 2022-2023

**Gordon Black** – President  
**Trisha Crichton** – Member  
**John Lagzdins** – Treasurer  
**Helen Holdsworth** – Secretary  
**Joanne Marchese** – Member  
**Patrick Earnest** – Member

## Our Tutors

**Segal Aggarwal** – French  
**Marie Baker** – French  
**Anna Basso** – Italian  
**Sue Braint** – Literature  
**Amber Callaghan** – Upholstery  
**Caroline Carruthers** – Writing and Literature  
**Deb De Stefanis** – Art  
**Kylie Hawkins** – Sewing  
**Kheng Lau** – Tai Chi  
**Susie Mioni** – Yoga  
**Claire Moon** – Steiner Playgroup  
**Terry Napier** – Nature in Art  
**Karen Nield** – Watercolour  
**Lynette Ng** – Zumba  
**Nicolas Panayotis** – Italian  
**Jennifer Redford** – Art  
**Janina Sienkiewicz** – Structured Playgroup  
**Robyn Simmons** – Buff Bones  
**Vivian Qui** – Jewellery  
**Maria Volpe** – Italian

## Our Volunteers

**Ruby Chu** – Administration  
**Loy Deitch** – Administration  
**Karen Kempe** – Chatty Café  
**Rosemary Kilmartin** – Chatty Café  
**Joanne Marchese** – Garden Club  
**Liz Neilson** – Administration  
**Chris Perrins** – Mahjong  
**Di Taylor** – Walk and Talk  
**Alison Vickers** – Policy and Procedures  
**Bernadette Walker** – Walk and Talk  
**Kerryn Williams** – Community Library

## Our 3126 Volunteers

**Philippa Cadman** – Proofreading  
**Ray Gruchy** – Writing and Photography  
**Margot Hennessy** – Writing, proofing and distribution  
**Joanne Marchese** – Graphic Design  
**Irene Montgomery** – Writing  
**Jenny Novick** – Writing and Editing

## 3126 Distribution Volunteers

Peter Adams  
Robin Adams  
Peter Barclay  
Trevor Bielski  
Lorri Buttner  
Jill Byron  
John Constable  
Carol Field  
David Giddings  
Faith Gunaratnam  
Margot Hennessy  
Lisa Hollingsworth  
Terry Hollingsworth  
Peter Jenkins  
Nick Katrevesis  
Di Muller

Terry Poulton  
Elaine Prest  
Gordon Prest  
Phil Robinson  
Claire Sargent  
Marc Sargent  
Joan Teele  
David Tink  
Deb Unkles  
John Unkles  
John Watts  
Martin Wettenhall  
Sue Wettenhall

## Partnerships and Friends

Abingdon Apartments  
Ashburton Scouts  
BASScare  
Bella Fabrics  
Bendigo Bank  
Boroondara Kids  
Canterbury Community Action Group (CCAG)  
Canterbury Gardens Kindergarten  
Canterbury Guides  
Canterbury History Group  
Camberwell Hockey Club  
Canterbury Toy Library  
Chatty Café  
City of Boroondara

- Community Planning & Development
- Community Support
- Early Years

Commonwealth Bank  
Interchange Inner East  
Love-2-Learn  
Maling Road Traders Association  
Network of Inner East Community Houses (NIECH)  
Neighbourhood Houses Victoria  
Northern Bridge Club  
Playstation Occasional Care  
Sunspun  
SuperSpeak  
Surrey Hills Historical Society



## Our Activities



### Term Programs

#### Social

- Book Circle
- Chatty Café
- Garden Club
- Mah Jong
- Bridge
- Social Crafters
- Walk and Talk
- Community Library

#### Wellbeing

- Buff Bones for Osteoporosis
- Tai Chi
- Yoga
- Zumba

#### Language and Literature

- French Absolute Beginners
- French Beginners Plus
- French Intermediate
- French Advanced
- Italian Absolute Beginners
- Italian Beginners
- Italian Intermediate
- Italian Advanced
- Writing Life

#### Creative

- Nature in Art
- Open Art
- Upholstery

#### Kids

- Steiner Playgroup
- Structured Playgroup



Our Activities cont.

### School Holiday Programs

Linocut Printing  
Pokemon LEGO!  
Sew a Tote Bag

### Workshops and Short Courses

Alcohol Ink  
Declutter your life!  
Dot Mandalas  
Floral Mosaics  
Historical Canterbury  
Walking Tours  
Introduction to Botanical Art  
DSLR & Mirrorless  
Photography  
Introduction to Vegie Growing



*Celebrating 40 years*





# The Financial Statements



# Treasurer's Report

## Financial Statements for the 12 months ended 30th June 2023

In the ordinary course of its activities for the year, the Canterbury Neighbourhood Centre incurred a Net Deficit of \$17,007. The prior year Net Ordinary Deficit was \$68,788 prior to Extraordinary Income of \$50,400 from the State Government (Business Support Program): a final deficit of \$18,338.

The Centre's Statement of Financial Performance shows total ordinary income of \$352,697 (prior year \$260,038), a significant increase mostly due to extra funding from Boroondara Council of \$56,100 to assist the Centre in establishing itself and as lead tenant in the new Canterbury Community Precinct. This funding will continue for the next two years.

Class activities are slowly rising to more normal levels with Class Fees of \$111,360 (prior year \$89,228). Major funding grants from the City of Boroondara and the Department of Families, Fairness and Housing amounting to \$219,094 (prior year \$164,938) were gratefully received and we thank these funding bodies.

Total expenses rose to \$369,704 (prior year \$328,826) as most expense categories showed cost increases some of which are directly related to our management of the new Precinct.

The Centre's Statement of Financial Position shows Total Cash of \$350,689.

Our various liabilities of \$98,195 are well covered.

Retained Earnings at 30th June amount to \$219,094 and Total Equity is \$261,525.

The Board thanks our Auditor, Mr. Alan Mai of Alan Mai Pty. Ltd. for auditing the Centre's accounts.

On behalf of the Board of Canterbury Neighbourhood Centre Inc.

**John Lagzdins**  
**Treasurer**  
**9th August 2023**

Canterbury Neighbourhood Centre Inc.  
ABN 90 896 989116

## Statement by the Board

In the opinion of the Board:

- (a) the accompanying Statement of Financial Performance is drawn up so as to give a true and fair view of the profit (or loss) of the Association for the year ended 30th June 2023.
- (b) the accompanying Statement of Financial Position is drawn up so as to give a true and fair view of the state of affairs of the Association as at 30th June 2023.
- (c) at the date of this Statement there are reasonable grounds to believe that the Association will be able to pay its debts as and when they fall due.

Signed in accordance with a resolution of the Board:

At Canterbury;

Signed:

*John Lagzdins*

**John Lagzdins**  
**Treasurer**

Signed:

*Helen Holdsworth*

**Helen Holdsworth**  
**Secretary**

Canterbury Neighbourhood Centre Inc.  
ABN 90 896 989116

## **Schedule 1**

(Regulation 15)

### **Form 1**

**Associations Incorporation Reform Act 1981**

Sections 94(2)(b), 97(2)(b) and 100(2)(b)

### **Annual Statements give true and fair view of Financial Position of Incorporated Association**

We, John Lagzdins and Helen Holdsworth being members of the Board of the Canterbury Neighbourhood Centre Inc., certify that;

The statements attached to this certificate, give a true and fair view of the financial position of the Canterbury Neighbourhood Centre Inc. during and at the end of the financial year of the association ending on 30th June 2023.

Signed:

*John Lagzdins*

**John Lagzdins**  
**Treasurer**

Signed:

*Helen Holdsworth*

**Helen Holdsworth**  
**Secretary**

## Statement of Financial Position

For Year Ended 30 June 2023

	2023 \$	2022 \$
<b>ASSETS</b>		
<b>Current Assets</b>		
Commonwealth Bank A/c	113,707.17	178,924.26
Bendigo Bank A/c	5,841.68	3,608.12
Bendigo Bank - Garden A/c	6,095.05	6,095.05
Term Deposit - Bendigo Community Bank	165,000.00	165,107.03
Term Deposit - Commonwealth Bank	60,000.00	0.00
Petty Cash	45.15	114.35
<b>Total Cash</b>	<b>350,689.05</b>	<b>353,848.81</b>
Accounts Receivable	200.00	0.00
Interest Receivable	5,080.00	0.00
<b>Total Receivables</b>	<b>5,280.00</b>	<b>0.00</b>
<b>Other Assets</b>		
Prepaid Expenses	2,652.11	2,829.55
Security Deposits and Bonds	1,100.00	1,100.00
<b>Total Other Assets</b>	<b>3,752.11</b>	<b>3,929.55</b>
<b>TOTAL ASSETS</b>	<b>359,721.16</b>	<b>357,778.36</b>
<b>LIABILITIES</b>		
<b>Current Liabilities</b>		
Accrued Wages	11,024.00	10,348.00
Creditors and Accruals	6,037.18	9,407.35
Fees Received in Advance	12,451.00	1,874.50
Grant Received in Advance	4,300.00	3,300.00
PAYG Tax withholding	4,458.00	3,500.00
Goods and Services Tax	3,804.47	2,571.72
Provision for Annual Leave	23,975.00	16,077.00
Provision for Long Service Leave	24,000.00	26,400.00
Superannuation Contributions	6,745.61	5,146.74
<b>Total Current Liabilities</b>	<b>96,795.26</b>	<b>78,625.31</b>
<b>Non Current Liabilities</b>		
Provision for Long Service Leave	1,400.00	620.00
<b>Total Non Current Liabilities</b>	<b>1,400.00</b>	<b>620.00</b>
<b>TOTAL LIABILITIES</b>	<b>98,195.26</b>	<b>79,245.31</b>
<b>NET ASSETS</b>	<b>261,525.90</b>	<b>278,533.05</b>
<b>EQUITY</b>		
Community Garden Funds	6,095.05	6,095.05
Restricted Funds - Legacy	36,904.92	36,904.92
Retained Earnings	235,533.08	253,921.39
Net Deficit	-17,007.15	-18,388.31
<b>TOTAL EQUITY</b>	<b>261,525.90</b>	<b>278,533.05</b>



## Statement of Financial Performance

For Year Ended 30 June 2023

	2023 \$	2022 \$
<b>ORDINARY INCOME/EXPENSE</b>		
<b>Income</b>		
<b>Fees</b>		
Class Fees	111,360.66	89,228.10
<b>Grants</b>		
City of Boroondara	125,376.90	75,342.03
Dept. Families, Fairness & Housing	93,717.60	89,595.97
Grants - Other	6,553.79	454.55
<b>Total Grants</b>	<b>225,648.29</b>	<b>165,392.55</b>
Interest on Term Deposit	5,145.23	492.74
Hire Income	900.00	0.00
Membership Fees	3,525.00	3,225.00
Newsletter & Advertising	600.00	1,700.00
Sundry Income	1,146.15	0.00
Tenant Contributions	4,372.50	0.00
<b>Total Other Income</b>	<b>15,688.88</b>	<b>5,417.74</b>
<b>Total Income</b>	<b>352,697.83</b>	<b>260,038.39</b>
<b>Expense</b>		
<b>Class Expenses</b>		
Contracted Tutor Fees	6,987.73	7,667.04
Materials	600.99	1,554.73
Offsite Rental	6,553.57	4,178.79
Playgroup Toys & Equipment	67.69	35.45
Tutor Long service Leave Provision	-2,396.00	-6,906.00
Tutor Superannuation	6,671.20	7,026.32
Tutor Wages	63,102.77	74,890.33
WorkCover Insurance	881.00	786.00
<b>Total Class Expenses</b>	<b>82,468.95</b>	<b>89,232.66</b>
<b>Operating Costs</b>		
Audit Fees	1,400.00	1,300.00
Bank Merchant Fees	1,212.42	1,216.73
Bookkeeping Fees	7,072.73	7,298.49
Communications - Phone and Net	3,117.35	1,964.36
Computer, Software & Licensing Fees	7,615.85	3,831.86
Consumables Kitchen & Bathroom	324.77	194.46
Equipment & Fittings	7,993.92	5,560.42
Governance and Planning	130.92	6,749.09
Hospitality	325.31	781.29
Insurance of Contents	1,135.23	1,103.76
Management Expenses	2,150.69	721.31
Photocopying	2,115.03	1,423.39
Postage	0.00	8.05
Publicity & Advertising	15,367.97	14,803.68
Rent - Community Centre	5,321.62	10,299.95
Stationery & Office Supplies	266.58	33.08
Subscriptions	893.18	1,309.55
Tenant Contributions	3,640.00	0.00
Utilities	2,500.00	0.00
<b>Total Operating Costs</b>	<b>62,583.57</b>	<b>58,599.47</b>

## Statement of Financial Performance continued

For Year Ended 30 June 2023

	2023 \$	2022 \$
<b>Staff and Administration Costs</b>		
Annual Leave Provision	7,898.00	1,098.00
Long Service Leave Provision	776.00	646.00
Portable Long Service Levy	3,065.54	2,592.08
Staff Development	59.09	68.18
Superannuation	19,976.90	15,663.17
Wages	190,219.17	159,201.38
WorkCover Insurance	2,657.76	1,725.76
<b>Total Staff and Administration Costs</b>	<b>224,652.46</b>	<b>180,994.57</b>
<b>Total Expense</b>	<b>369,704.98</b>	<b>328,826.70</b>
<b>Net Ordinary Deficit</b>	<b>-17,007.15</b>	<b>-68,788.31</b>
<b>Extraordinary Income and Expense</b>		
State Government Business Support	0.00	50,400.00
Federal Govt. Cash Flow Boost	0.00	0.00
Federal Govt. JobKeeper Support	0.00	0.00
Less JobKeeper top-up payments	0.00	0.00
<b>Net Extraordinary Income</b>	<b>0.00</b>	<b>50,400.00</b>
<b>Net Deficit</b>	<b>-17,007.15</b>	<b>-18,388.31</b>

## Statement of Changes in Equity

For Year Ended 30 June 2023

	2023 \$	2022 \$
<b>Retained Earnings</b>		
Balance 1st July 2022	235,533.08	253,921.39
Deficit for year	-17,007.15	-18,388.31
Balance 30th June 2023	218,525.93	235,533.08
Restricted Funds - Legacy	36,904.92	36,904.92
Canterbury Community Garden Group	6,095.05	6,095.05
<b>Total Equity</b>	<b>261,525.90</b>	<b>278,533.05</b>

## Statement of Cash Flows

For Year Ended 30 June 2023

	2023 \$	2022 \$
<b>Cash flows from Operating Activities</b>		
Receipts from class fees – including in advance	123,812	91,103
Government business support	0	50,400
Grants received – including in advance	229,948	168,692
Hire income	900	0
Membership fees	3,525	3,225
Newsletter income	600	1,700
Other income	1,146	0
Tenant contributions	4,372	0
Payments to suppliers and employees	-372,608	-334,283
<b>Net cash provided by operating activities</b>	<b>-8,305</b>	<b>-19,163</b>
<b>Cash flows from financing activities</b>		
Interest	5,145	493
Canterbury Community Garden Group	0	0
	<b>5,145</b>	<b>493</b>
Net decrease in cash held	-3,160	-18,670
Cash at the beginning of the year	353,849	372,519
<b>Cash at the end of the financial year</b>	<b>350,689</b>	<b>353,849</b>
<b>Reconciliation of Cash Flow from Operations</b>		
Net deficit for year per accounts	-17,007	-18,388
Changes in assets and liabilities		
Increase in payables, accruals	1,095	6,022
Increase in fees and grants in advance	11,576	-1,700
Increase in receivables	-5,280	252
Decrease in prepayments	178	306
Increase in Provisions for employee leave	6,278	-5,162
<b>Net (Decrease) in cash held</b>	<b>-3,160</b>	<b>-18,670</b>

## Notes to the Financial Statements

### For Year Ended 30 June 2023

#### 1. **Statement of Significant Accounting Policies**

These financial statements are a special purpose financial report prepared in order to satisfy the financial reporting requirements of the *Australian Charities and Not-For-Profits Commission Act 2012*.

The accrual basis of accounting has been applied in the preparation of these financial statements whereby assets, liabilities, equity, income and expenses are recognised in the reporting period to which they relate, regardless of when cash is received or paid. The financial statements are prepared in accordance with the historical cost convention.

#### 2. **Income Tax**

Canterbury Neighbourhood Centre is endorsed for exemption from Income Tax.

#### 3. **Employee Benefits**

Provision is made for the Centre's liability for annual and long service leave arising from services rendered by employees to balance date. Under the provisions of the State Portable Long Service Authority which came into effect July 1st, 2019, long service leave is provided for all office staff from that date funded by a levy paid to the Authority. The liability for long service leave as at 30th June, 2023 has been brought to account as Provision for Long Service Leave where employees with five or more years of service are classified as a Current Liability. Long service leave for employees with under five years of service are classified as a Non-Current Liability.

#### 4. **Canterbury Community Garden Group**

The Centre continues to auspice the Garden Group under a Memorandum of Understanding where the Centre provides banking facilities and essential insurance cover at no cost under the Centre's existing arrangements. The Garden Group's activities are neither a source of income nor an outlay of expense for the Centre.

#### 5. **Events occurring after balance date.**

Since the end of the financial year, the Board is not aware of any matter or circumstance that may affect the operations of the Association.

Canterbury Neighbourhood Centre Inc.  
ABN 90 896 989116

## 2023 Independent Audit Report to the members of Canterbury Neighbourhood Centre Inc.

### Independent Auditor's Review Report

I have reviewed the attached financial statements of Canterbury Neighbourhood Centre Inc. for the year ended 30 June 2023 and the attached Notes comprising a summary of significant accounting policies and the Treasurer's Report.

The Board of the Centre are responsible for the preparation of the financial statements and have determined that the basis of preparation described in Note I to the financial report is appropriate to meet the requirements of the Australian Charities and Not-for-Profits Commission Act 2012 (ACNC Act) and the needs of the Board.

### Auditor's Responsibility

My responsibility is to express a conclusion on the financial report based on my review. I conducted my review in accordance with Auditing Standard on Review Engagements ASRE 2415 Review of a Financial Report: Entity Reporting under the ACNC Act, in order to state whether, on the basis of the procedures described, anything has come to my attention that causes me to believe that the financial report does not satisfy the requirements of Division 60 of the ACNC Act including giving a true and fair view of the Board's financial position as at 30 June 2023 and its performance for the year ended on that date.

A review of the financial report consists of making enquiries, primarily of persons responsible for financial and accounting matters, and applying analytical and other review procedures. A review is substantially less in scope than an audit and consequently does not enable me to obtain assurance that I would become aware of all significant matters that might be identified in an audit.

### Conclusion

Based on my review, nothing has come to my attention that causes me to believe that the financial report of Canterbury Neighbourhood Centre Inc. does not satisfy the requirements of Division 60 of the ACNC Act.

Without modifying my conclusion, I draw attention to Note I in the financial report, which describes the basis of accounting. The financial report has been prepared for the purpose of fulfilling the responsible entity's financial reporting responsibilities under the ACNC Act. As a result, the financial report may not be suitable for other purposes.

ALAN MAI PTY LTD



A.G. Mai  
Principal & Registered Company Auditor

17 August 2023

*Celebrating 40 years*







**canterbury**  
NEIGHBOURHOOD CENTRE

**Canterbury Neighbourhood Centre Inc.**  
ABN 90 896 989 116

Registration Number: A0015323E:

 2 Kendall Street Canterbury 3126

 03 9830 4214

 office@canterburync.au

 canterburync.au